



HSR48 Data Sheet

This is a temporary data sheet containing important information about the new Mikuni HSR48mm carburetor.

NOTE: The HSR48 is meant for racing only and may not fit onto stock motorcycles without significant modification of that motorcycle. Treat it as a true racing part, one that is meant for custom installations and not as a simple replacement part.

Engines producing more than 120 horsepower should supply fuel from an electric fuel pump to the HSR48. Do not exceed 4 psi and use the smaller Mikuni Needle Valve Assembly (p/n: 786-27001-2.3).

Installation:

The HSR48 can be mounted to an S&S "G" manifold using a Mikuni rubber flange, (p/n: HS42/062-48). The rubber flange fits the "G" manifold without modification.

The "G" manifold plus the Mikuni rubber flange does result in the HSR48 protruding further than the stock Harley carburetor and may touch the gas tank.

Standard Jetting Specifications:

Description	Size	Part Number
Main jet	190	N100.604-190
Pilot jet	25	VM28/486-25
Jet Needle	-97	J8-8CFY02-97 (E-clip in 3 rd groove)
Needle Jet	Y-6	784-430000-Y-6
Pump Nozzle	70	TM42/11-70
Needle Valve:	4.5	786-27002-1A

Additional Tuning Components:

Main Jets:	180 through 240
Pilot Jets:	20 through 35 in 2.5 increments
Jet Needle:	-95, -96 (both richer) and -98 (leaner)
Pump Nozzle:	-50, -60 (both leaner than std. -70)
Needle Valve:	786-27001-2.3 (smaller - for pressurized fuel feed)

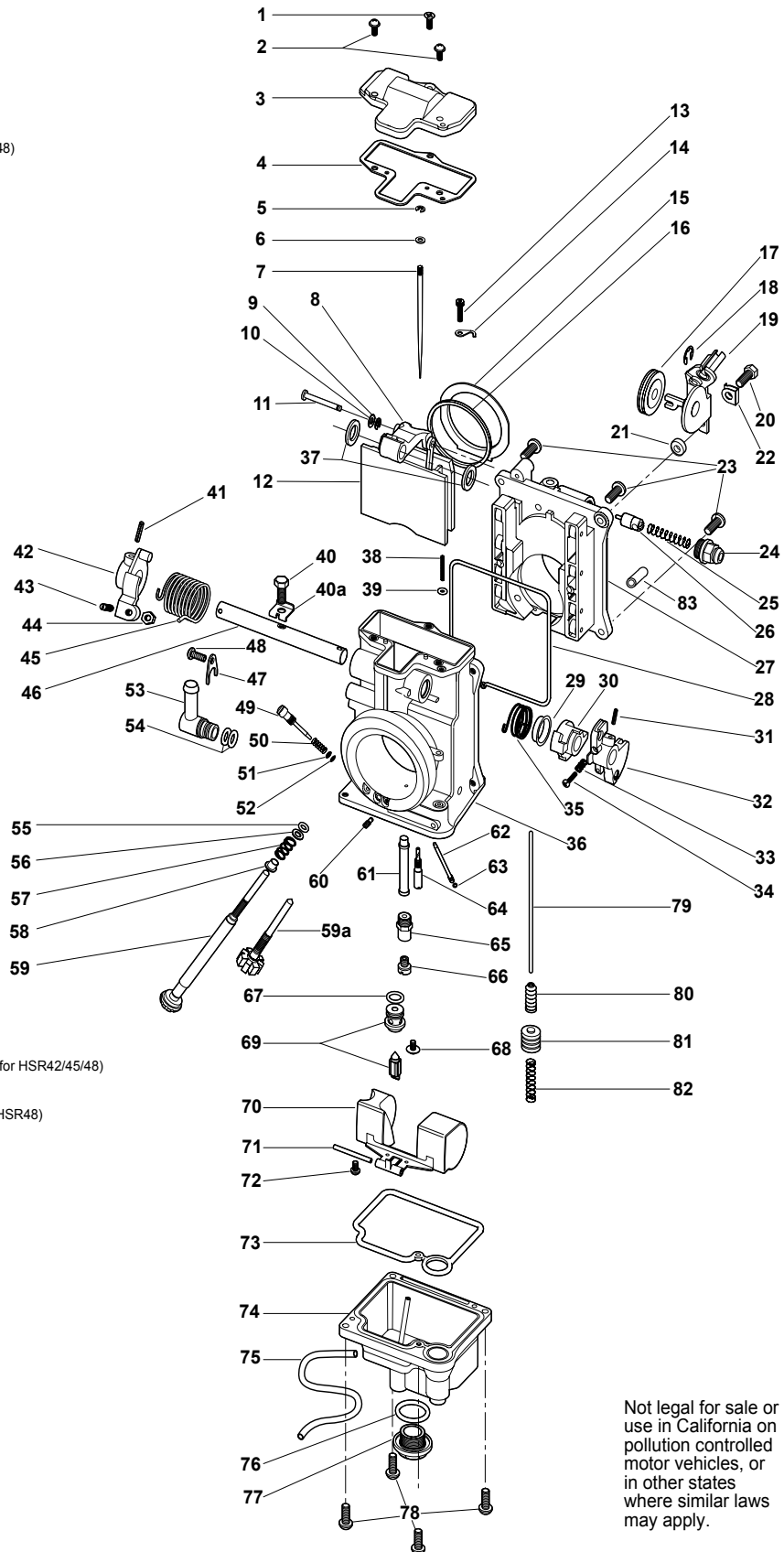


HSR48 Carburetor

No.	PART No.	DESCRIPTION
1.	C5=0414-B	Screw, Top Cover
2.	CW2=0416-B	Screw, Top Cover (2)
3.	111-776-001	Top Cover
4.	TM42/04	Gasket, Top Cover
5.	BS32/126	E-Ring, Jet Needle
6.	826-03002	Washer, Needle Clip
7.	J8-8CFY02-	Jet Needle (HSR45/48)
8.	TM42/03	Lever, T.V.
9.	B401/56	E-Ring
10.	B401/10	Packing, Link Lever
11.	834-23041	Pin, Link Lever
12.	TM42/08-1A	Throttle Valve
13.	739-13002	Screw, Needle Retainer
14.	TM42/16	Clip, Needle Retainer
15.	TM48/04	Sealing Ring, T.V.
16.	TM42/10	Seal, Throttle Valve
17.	925-98006	Pulley, Cable Bracket
18.	53974	E-Ring, Cable Bracket
19.	TM42/51	Bracket Assy., Cable
20.	B3=0520-B	Bolt
21.	VM28/204	Spacer
22.	TM42/38	Plate, Lock Tab
23.	C2=0514-B	Screw
24.	640-12001	Guide Holder (Starter)
25.	VM14/241	Spring, Starter Plunger
26.	N189.192	Starter Plunger
27.	TM48/02	Body Assy., Bearing & Spigot (N/A)
28.	616-94029	Seal, Spigot Body
29.	925-19011	Ring (Steel)
30.	TM42/43	Lever
31.	N138.019	Pin, Throttle Lever
32.	TM42/48	Lever, Throttle
33.	M12F/46-BB	Spring, Accel. Pump
34.	MC-0316-B	Screw, Accel. Adjust
35.	TM42/47	Spring, Accel. Pump
36.	TM48/51/01-0	Mixing Body Assy (N/A)
37.	B36/95	Packing, Shaft (Plastic)
38.	TM42/36	Adjusting Screw, A/P
39.	B30/205	O-Ring, A/P Screw
40.	TM42/89	Bolt
40a.	TM42/17	Lock Tab, Shaft
41.	BN38/43	Pin, A/P Lever
42.	TM42/46	Lever, Return Spring
43.	N140-409	Screw, Throttle Stop
44.	N3=04	Nut, Throttle Stop
45.	TM42/19	Spring, Throttle Return
46.	700-15012-1A	Shaft, Throttle
47.	TM42/15	Plate, Fuel Joint Retainer
48.	C2=0410-B	Screw, Fuel Joint Retainer
49.	604-26014	Screw, Pilot Air Adjusting
50.	N133.206	Spring, Pilot Air
51.	VM12/205	Washer, Pilot Air Screw
52.	N133.037	O-Ring, Pilot Air Screw
53.	TM40/27	Fuel Joint
54.	KV/10	O-ring, Fuel Joint (2)
55.	B30/398	Packing, Idle Adjuster
56.	VM22/138	Washer, Idle Adjuster (steel)
57.	730-09018	Spring, Idle Adjuster
58.	925-15001	Ring, Idle Adjuster (Brass)
59.	TM42/32	Idle Adjuster Assy (Long)
59a.	990-605-065	Idle Adjuster Screw (Short)
60.	BS30/97-00	Air Jet (Blank)
61.	784-430000-Y-6	Needle Jet (723 Series)
62.	TM42/11-	Nozzle, Accelerator Pump
63.	N124.063	O-Ring, A/P Nozzle
64.	VM28/486-25	Pilot Jet
65.	TM42/12-1A	Extender, Main Jet
66.	N100.604-	Main Jet
67.	616-33003	O-Ring, N.V
68.	VM13/216	Screw w/Washer, N.V. Retainer
69.	786-27002-1A	Needle Valve Assy. with O-ring (size: 4.5)
70.	858-32027	Float Assy
71.	BV28/22	Pin, Float
72.	C2=0410	Screw, Float Pin
73.	616-94028	Packing, Float Bowl
74.	TM42/05	Float Chamber Body
75.	N122.028	Hose, Overflow
76.	VM28/254	O-Ring, Drain Plug
77.	TM32/41-1D	Drain Plug
78.	C2=0412-B	Screw, Float Bowl (4)
79.	TM36/44-1B	Rod, A/P
80.	TM36/64	Boot, A/P Rod
81.	TM36/60	Plunger, A/P
82.	VM14SC13/89	Spring, A/P
83.	N198.063	Cap, Purge Port

-98 lean
-97 (std for HSR48)
-96
-95 rich

-50 lean
-60
-70 (std for HSR42/45/48)
-75 rich



Part Number (000-000) = no available stock

Not legal for sale or use in California on pollution controlled motor vehicles, or in other states where similar laws may apply.